

THIRD ANNUAL

DESIGNER SHOWCASE HOUSE



A FUND-RAISING PROJECT
OF THE JUNIOR LEAGUE
OF SACRAMENTO

APRIL 26-MAY 11, 2003

PUBLISHED FOR THE JUNIOR LEAGUE BY
THE CUSTOM PUBLISHING DIVISION OF

sacramento
MAGAZINES
CORPORATION

HISTORY OF THE HOUSE

WELCOME TO THE 2003 Junior League Designer Showcase House. Located on 45th Street in the "Fabulous Forties" section of East Sacramento, the house was designed by the noted local architects Charles and James Dean and built in 1937 for Earl and Mae Henderson. The Hendersons spent a then-lavish \$19,000 to construct the house, perhaps the last grand house constructed in the Fab Forties.

Earl Henderson and his brother A.J. (who lived just two blocks away on 44th Street) founded Henderson Brothers Auto Parts in 1917 at the dawn of the auto age. Henderson lived in the house until his death in 1990.

The grand white-brick Tudor, spread over two generous lots, is a bit deceiving to the eye. Despite the house's impressive façade, which still maintains its original surface detail, including leaded and stained glass windows and intricately detailed gutters, the original five-bedroom, four-bath house was a surprisingly modest 3,800 square feet. The double-height, massively trussed living room, original four-car garage and porte-cochère dramatically extend its visual mass.

Over the years, modifications to the original floor plan have been minimal. The original dining room, directly beyond the foyer and central staircase, now serves as a reception area with a

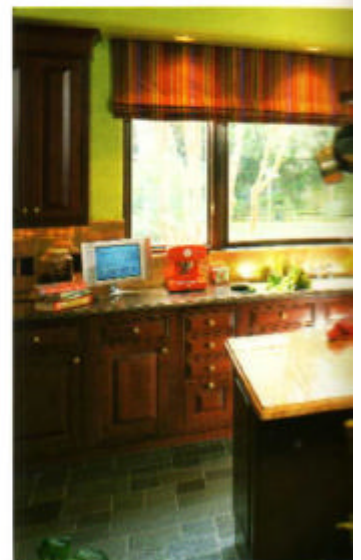
newer, built-in bar. The original library is now the dining room. An original cloak closet, which sat over the stairs leading to the basement, has been removed, providing a more visually open and gracious entry.

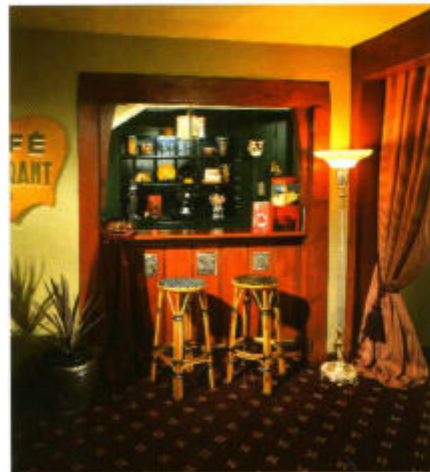
The current owners, only the second occupants of the house, have worked to preserve its original look and feel. A sizable early-1990s addition, which includes a new upstairs master suite and a new kitchen, family room and double-height exercise room/office, has been meticulously integrated with the old, inside and out. For example, the original building plans reveal that the staircase off the kitchen to the second floor is not original to the house, although it would be hard to imagine the house without it.

This year's theme for the Junior League Designer Showcase House is "How We Live Today." The designers have worked to show how a house can function for a multigenerational family with two working professional parents, blended offspring and a live-in child-care provider.

The color palette was developed from Sherwin-Williams' new line of colors and springs from the existing materials in the house, including the green of the Vermont slate roof, the dark brown of the ebonized wood floors, and the rich cherry color of the cabinets. The accent colors are reds and yellows.

BY KERRY PHILLIPS





The cozy reception area (above) was designed by Micholite Sekula of Sekula's Fine Antiques & Design. The kitchen (far left) got a sassy makeover from designer Janice Stone Thomas, while the home theater (left) features a concession stand, courtesy of Debbie Guelco, Jennifer Slepny and Amy Eto.

2 RECEPTION/HOSPITALITY

INSPIRED BY A CENTURY of great design, this room has a sense of history, life experience and timeworn comfort. The reception room greets and gives you your first impression of the home and its owners. It is restrained and classical in style, yet has just a touch of the unexpected. The designers began with a carpet originally designed at the turn of the century by Archibald Knox. Called The Wiltshire, the carpet has a Celtic motif that provided the room with its color palette. The designers' vision for the furnishings was the understated elegance of the seasoned traveler's collection of fascinating antiques and artifacts. They put it all together to create a welcoming reception room where guests can gather and the eye can linger on the unanticipated detail. It is a room that comforts and envelopes you with imagination and intrigue.

Resources:

Sekula's Fine Antiques: furnishings and accessories
Now and Again Antiques: furnishings and accessories
Dish Inspired Tableware: stemware and dishes
Bibelot, Lezlie Sisco: drapery; Interior Services: fabric
Silk Trading Company: fabric; S. Harris Fabricut Inc.: fabric
Everett Painting: custom painting
Artistic Designs Inc.: custom finishes and artwork
Design Woodworking: custom woodworking
Shauna Ceberst Gallagher, Medimer: marble and stone
Montgomery Marble: custom stone cutting
Twiggs Floral Design Gallery
Rick Bales: custom painting



Michelle Sekula
Sekula's Fine Antiques & Design
855 57th Street, Suite B
Sacramento, CA 95819
(916) 451-9565